

## REFERENCE LIST (EXCERPT)

### Concrete repair

#### SPASSBAD PAPPELSEE LEISURE POOL DIVING TOWER, KAMP-LINTFORT (2011)

##### Repair of the reinforced concrete structure

###### Client

Spaßbad Pappelsee  
Bertastraße 74  
47475 Kamp-Lintfort

###### Services

Status survey  
Repair concept  
Tender  
Monitoring performance of work



#### SOLVAY NATURAL DRAFT COOLING TOWER, RHEINBERG (2015)

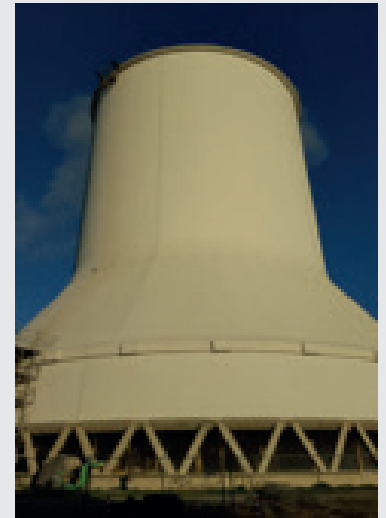
##### Repair of cooling tower shell (approx. 7,500 m²)

###### Client

Solvay Chemicals GmbH  
Xantener Straße 237  
47495 Rheinberg

###### Services

Site inspection for status survey  
Sample area  
Repair concept  
Tender, award of contract  
Monitoring performance of work



## RAINWATER RETENTION BASIN, DUISBURG-HOCHFELD SEWAGE TREATMENT PLANT (2012)

**Repair of reinforced concrete basin (approx. 4,500 m<sup>2</sup>)**

### **Client**

Wirtschaftsbetriebe Duisburg – AöR  
Schifferstraße 190  
47059 Duisburg

### **Services**

Status survey  
Sample area  
Repair concept  
Tender, award of contract  
Monitoring performance of work



## REPAIR OF WATER POLLUTION CONTROL SURFACES DURING ONGOING PRODUCTION, DUPONT (2009–2015)

**Repair of floor surfaces**

### **Client**

DuPont Performance Coatings  
Christbusch 25  
42285 Wuppertal

### **Services**

Status survey  
Sample area  
Repair concepts  
Verifications of suitability  
Monitoring performance of work



## REPAIR OF WATER POLLUTION CONTROL SURFACES DURING ONGOING PRODUCTION, P&G (2014–PRESENT)

**Repair by means of crack saturation and flooding**

### **Client**

Procter & Gamble  
Mainzer Straße 176  
67547 Worms

### **Services**

Status survey  
Sample area  
Repair concepts  
Verifications of suitability  
Monitoring performance of work



## REPAIR OF WATER POLLUTION CONTROL SURFACES DURING ONGOING PRODUCTION, DAIMLER AG (2014–2016)

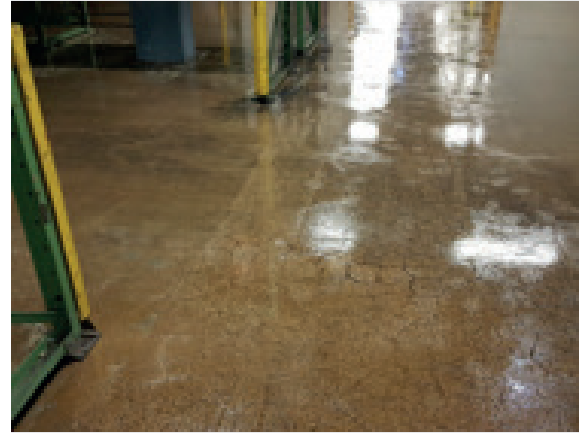
### Repair by means of crack saturation and flooding

#### Client

Daimler AG Mercedes-Benz  
Werk Gaggenau  
76568 Gaggenau

#### Services

Status survey  
Sample area  
Repair concepts  
Verifications of suitability  
Monitoring performance of work



## COOLING TOWER DISHES OF COOLING TOWERS III, V, VI, DÜSSELDORF-FLINGERN POWER PLANT (2010–2013)

### Concrete repair and coating

#### Client

Stadtwerke Düsseldorf AG  
Höherweg 100  
40233 Düsseldorf

#### Services

Status survey  
Repair concepts  
Tender  
Monitoring performance of work



## NEW CONSTRUCTION OF BLOCK AND SCRAP HALL AS WATER POLLUTION CONTROL SEALING SURFACE, GRILLO (2013)

### Planning of floor surfaces as water pollution control sealing surfaces

#### Client

Grillo Handelsgesellschaft mbH  
Duisburg

#### Services

Concrete technology  
Performance planning  
Tender (concreting work)  
Monitoring performance of work



## ALTMARKT CAR PARK, DINSLAKEN (2014–2015) Repair of the steel/reinforced concrete structure

### Client

WEG Altstadt West  
IMMO-Partner  
Haus- und Vermögensverwaltung  
Konrad-Adenauer-Straße 58  
46535 Dinslaken

### Services

Structure inspection for status survey  
Repair concept  
Tender, award of contract  
Site supervision  
Monitoring performance of work

## BALCONY REPAIR ALTSTADT WEST, DINSLAKEN (2015–2016) Repair of 52 balconies

### Client

WEG Altstadt West  
IMMO-Partner  
Haus- und Vermögensverwaltung  
Konrad-Adenauer-Straße 58  
46535 Dinslaken

### Services

Structure inspection for status survey  
Repair concept  
Tender, award of contract  
Site supervision  
Monitoring performance of work

## NEW CONSTRUCTION OF LIQUID-TIGHT COLLECTING BASINS DURING EXPANSION OF A COKING PLANT (2012)

**New construction of reinforced concrete structures subject to regulations for water-polluting substances under the German Water Resources Law (WHG)**

### Client

Hüttenwerke Krupp Mannesmann GmbH  
Ehinger Straße 200  
47251 Duisburg

### Services

Concrete technology  
Consulting  
Monitoring performance of work



## NEW CONSTRUCTION OF A QUENCHING TOWER FROM REINFORCED CONCRETE DURING EXPANSION OF A COKING PLANT (2011–2012)

**Manufacture of a quenching tower in the steel industry  
sector by means of a climbing formwork process**

### **Client**

Hüttenwerke Krupp Mannesmann GmbH  
Ehinger Straße 200  
47251 Duisburg

### **Services**

Concrete technology  
Consulting  
Monitoring performance of work

## NEW CONSTRUCTION OF 2 CEMENT SILOS (2011–2012)

**New construction of 2 cement silos using slip forming  
with blast furnace cement**

### **Client**

Cemex WestZement GmbH  
Am Kollerbach 27  
59269 Duisburg

### **Services**

Concrete technology  
Consulting  
Monitoring performance of work

## NEW CONSTRUCTION OF A CHIMNEY SYSTEM DURING EXPANSION OF A COKING PLANT (2012–2013)

**New construction of a chimney system for the steel industry  
using slip forming**

### **Client**

Hüttenwerke Krupp Mannesmann GmbH  
Ehinger Straße 200  
47251 Duisburg

### **Services**

Concrete technology  
Consulting  
Monitoring performance of work



